

Bag Closing Machine Suspended from Top Lock Spring Balancer



with V-Belt Power Transmission

for easy and effortless sewing of filled bags



- **Sturdy**
- **Efficient**
- **Reliable**



80800LGN:

Self contained bag closing unit suspended from the ceiling for closing filled bags of all kinds of materials such as made from jute, cotton, paper, plastic or woven polypropylene .

Includes:

- sewing head 80800CN, two thread double locked stitch machine, with mechanically operated chain cutter (sewing head 80800DN, single thread chain stitch machine available on request).
- top lock spring balancer 90191FB for weightless suspension.
- V-belt power transmission between motor and sewing head, completely protected.
- constant speed, therefore suitable in connection with conveyors.
- handwheel for easy threading.
- push button switch for easy and effortless sewing.

Option:

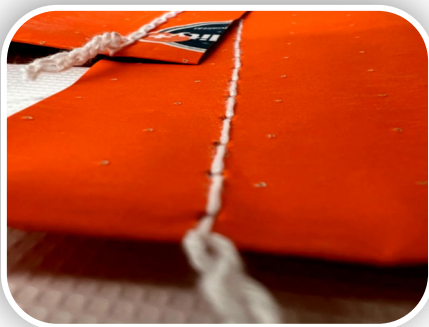
- filler cord thread stand for sealing needle punctures.

Technical Specifications:

- Stitch range: 6.5 - 11 mm
- Standard setting: 8 mm
- Speed: 1250 stitches per minute at 50 Hz
- Sewing capacity: 5/8 inch (16 mm)
- Sewing capacity on paper bags: up to 32 plies of paper, depending on weight of paper
- Electric motor: 220-240 / 380-420V, 50 Hz, three phase 0,37 kW, 1350 RPM
255-275 / 440-480V, 60 Hz, three phase 0,44 kW, 1660 RPM

80800LAN: Same as 80800LGN, but with electric motor 230V, 50 Hz, single phase 0.37 kW

Plain Closure



Fold-over Closure

