



YOUR PARTNER FOR HIGHEST EXPECTATIONS

Available machine styles				Equipment	
Electrical Specifica- tions	Two thread chainstitch stitch type 401	Single thread chainstitch stitch type 101	Two needle four thread chainstitch stitch type (401.401)		
Standard Bag Closing Machines for closing filled bags and sacks					
	80800CN	80800DN	80800CDN	Start-stop actuated by foot switch of column	Thread chain cutting by conti- nuously driven nibbler knives
Automatic Bag Closing Machines for closing filled bags and sacks					
24 V DC	80800RLMN	80800SLMN	80800RDLMN	Start-stop automati- cally by feeler controlled proximity switch	Thread chain cutting auto- matically by air operated jump out scissors
200-230 V, 50/60 Hz	80800RLN	80800SLN	80800RDLN	•	•
100-110 V, 50/60 Hz	80800RLBN	80800SLBN		•	•



80800 BAG CLOSING MACHINES



Union Special originated the first filled bag closing machines and for over 120 years has continued to develop better equipment to keep pace with the needs of packers.

Our series 80800 will meet your expectations regarding perfect feeding of the material and high resistance against malfunction. Additionally this style will convince you with easy maintenance and worldwide high renown.

● **Sturdy** ● **Reliable** ● **Efficient**



80800 Bag closing machines

Very durable and simple bag closing machine. Depending on the equipment, it is used for manual bag closing or also suitable for automation. It can be used to close large bags. You can simply close the bags or you can also close the bags folded at the upper edge of the bag.

As a rule, the machine is mounted on a column. However, there is also the possibility to suspend the machine from a rope.

80800CN



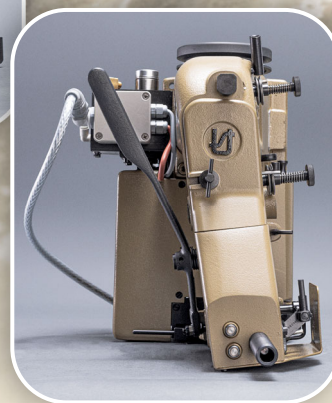
Single needle double locked chainstitch bag closing machine for closing filled bags made from burlap, jute, cotton, plastic and paper.

Sewing parts with special rust prevention coating

Max. speed: up to 1800 stitches/min.
Depending on material and operation

Stitch length: 6.5 - 11 mm
Standard setting : 8 mm
Capacity under presser foot: up to 12.7 mm

80800RLN



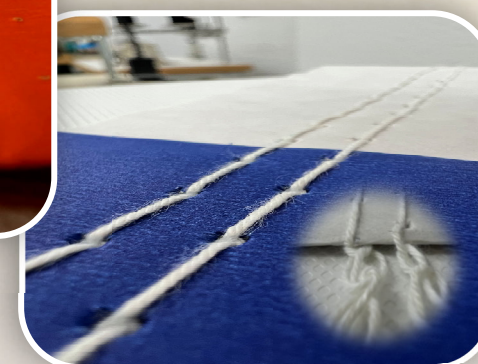
Two needle double locked chainstitch bag closing machine with special rust prevention coating sewing parts

- Nearly doubles the seam strength of your closed bags using two rows of independent stitching at a distance of 7.2 mm.
- Reduces leakage of your closed bags, avoiding product loss during transportation.
- Longer stitch length increases your production without increasing the sewing machine speed.

Max. speed: up to 1800 stitches/min.
depending on material and operation

Stitch length: 6.5 - 11 mm
Standard setting : 10 mm
Capacity under presser foot: up to 16 mm

Plain closure



Fold-over closure

