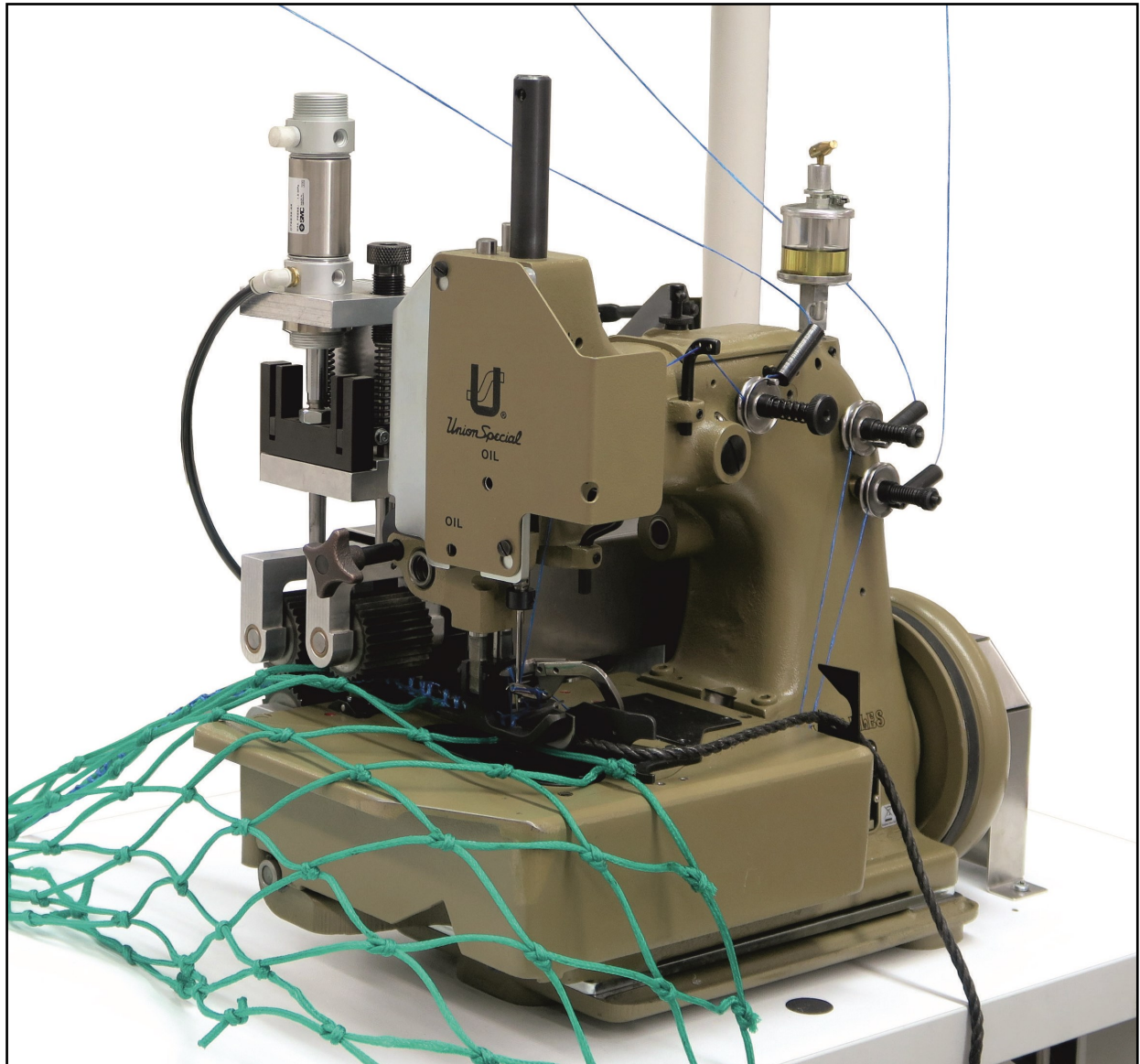




Union Special®
INDUSTRIAL SEWING EQUIPMENT

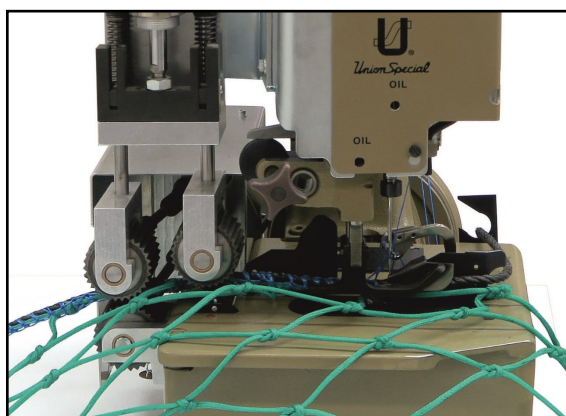
81500CZ3374A
81500CZ3374B

**SINGLE NEEDLE THREE THREAD OVEREDGING
SEWING MACHINES
PERFECT FOR ATTACHING ROPES TO NET BORDERS**



81500CZ3374A 81500CZ3374B
with
Sewing Table UN380G132

- **STURDY**
- **EFFICIENT**
- **RELIABLE**
- **FAST**



81500CZ3374A FOR ROPES 5/32 TO 15/32 INCH



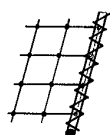
81500CZ3374B FOR ROPES 25/64 TO 5/8 INCH

Technical Specifications:

Stitch Range: 2 - 5 SPI (4 - 12 mm)
Standard Setting: 2.5 SPI (10 mm)
Sewing Capacity: 5/64 - 25/64 inch (2 - 10 mm)
5/64 - 15/32 inch (2 - 12 mm)

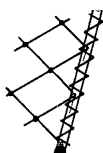
Thickness of Ropes: 4 - 12 mm / 10 - 16 mm
(depending on material)
Standard Needle: 9853GA300/120
Needle (on request only): 9844GAN300/120
Needle Stroke: max. 2 51/64 inch (71 mm)

Stitch Type / Seam Type

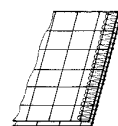
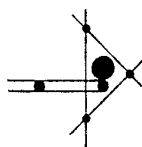


Net parallel
to rope

Stitch Type 504
Seam Type EFd-1

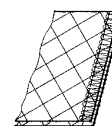


Net diagonal
to rope



Nets joined
parallel

Stitch Type 504
Seam Type SSa-1



Nets joined
diagonal

Machine Type	Description	Operation	Stitches/Minute	Required Installation
81500CZ3374A High Needle Stroke Machine	<p>Single Needle, Three Thread Overedging Sewing Machine</p> <p>Hand wheel pitch dia = 5 27/32 inch (150 mm)</p> <p>Motor pulley pitch dia = 3 15/16 inch (100 mm)</p> <p>Needle Thread: Net Yarn 210/24 or 210/30 PP Yarn, 4000 Denier</p> <p>Looper Thread: Net Yarn 210/24 or 210/30 PP Yarn, 4000 Denier</p> <p>Feed: Intermittent stepper twin puller, two driven upper and one driven lower roller. Roller pitch 5 mm.</p> <p>Throat plate without feed dog slots for sewing parallel to the meshes. Stepper twin puller with throat plate and feed dog for sewing diagonal to the meshes.</p> <p>Extra order parts for attaching ropes from 25/64 inch to 5/8 inch (10 - 16 mm) - depending on the thickness of the net and size of knots:</p> <p>Throat plate 81524LA Cloth guide tongue 81503MA Edge guide 81303FLA Collar for looper 81537</p>	<p>For attaching ropes from 5/32 inch to 15/32 inch (4 - 12 mm) - depending on the thickness of the net and size of knots - as border or tensioning rope to nets used for sports, protection or safety.</p> <p>For nets sewn parallel to the meshes, no feed dog is used and the throat plate has no slots (Standard version).</p> <p>For nets sewn diagonal to the meshes a feed dog and throat plate is included.</p> <p>Max. SPI 2.5 (10 mm).</p> <p>For joining nets larger than 45 mm mesh width.</p>	<p>1200, depending on sewing operation and material.</p> <p>Recommended operating speed 950.</p>	<p>UN380G132 Sewing table with clutch motor</p>
81500CZ3374B	<p>Same as 81500CZ3374A but with parts for ropes from 25/64 inch to 5/8 inch (10 - 16 mm).</p>			

Performance tests necessary on above machines

Subject to change without notice © Union Special GmbH

